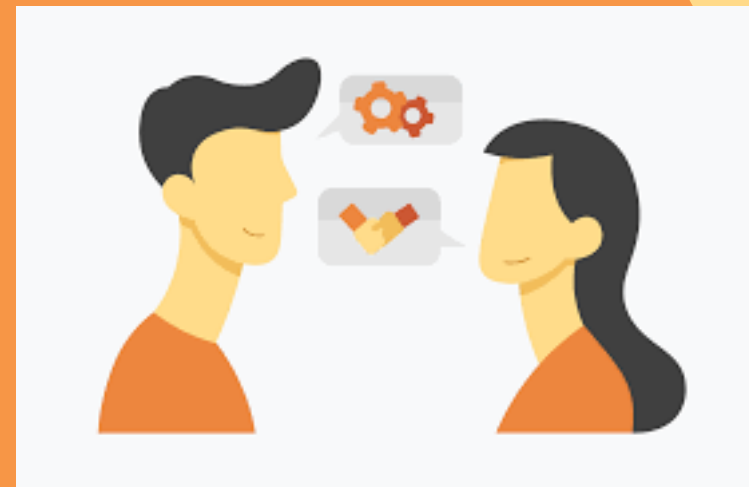


# KULIAH PERDANA KOMUNIKASI ANTARPRIBADI



PRODI ILMU KOMUNIKASI  
Tahun Akademik 2022/2023



# DALAM HIDUP, KITA MELAKUKAN PILIHAN!

## Penonton



## Pemain



# DALAM HIDUP, KITA MELAKUKAN PILIHAN!

## Penonton



## Pemain





# KONTRAK BELAJAR

1. Antusias
2. Terdaftar di dalam KRS
3. *Open minded*
4. Disiplin waktu
5. Perkuliahan luring, daring, hibrid
6. *On Camera* - *unmute* ketika daring
7. Duduk sebagaimana kuliah di kelas, berpakaian sebagaimana ke kampus
8. Minta izin jika mau bicara
9. Penilaian akhir adalah akumulasi beberapa komponen
10. Mengikuti semua kesepakatan

- 
- Two decorative teal arcs are positioned at the top right of the slide, curving downwards and to the left.
1. Kuliah Perdana
  2. Mengapa kita perlu mempelajari KAP
  3. 10 keahlian di Era Disrupsi
  4. Definisi KAP
  5. Prinsip KAP
  6. Model KAP
  7. Efektivitas KAP
  8. UTS
- 
- A decorative graphic in the bottom left corner consists of several teal squares of varying sizes, some overlapping, arranged in a cluster.

A decorative pattern of white dots is arranged in a grid on the upper left side of the orange background.A decorative pattern of white dots is arranged in a grid on the lower right side of the orange background.

## RANCANGAN PEMBELAJARAN SEMESTER (RPS)

- 
- Two curved teal lines are positioned at the top center of the page.
- 
- A cluster of teal squares is located in the bottom left corner, arranged in a roughly circular pattern.
9. Hubungan Antarpribadi
  10. Assertiveness
  11. Listening
  12. Manajemen Konflik
  13. Teori KAP
  14. Review dan Sosialisasi Smart Goals
  15. Progres Smart Goals
  16. UAS

A large grid of white dots is positioned on the right side of the page, partially overlapping the title box.

**RANCANGAN  
PEMBELAJARAN  
SEMESTER (RPS)**



# Contact us

---

**Ibu Jenny RS:**

**08121485860**

**[jenny.suminar@unpad.ac.id](mailto:jenny.suminar@unpad.ac.id)**

**Ibu Puji:**

**081214786511**

**[Puji.prihandini@unpad.ac.id](mailto:Puji.prihandini@unpad.ac.id)**